



**LA MIRADA**  
NEW CAIRO

*La Mirada Plaza*

# LA MIRADA PLAZA

La Mirada Plaza is a 3,850 m<sup>2</sup> shopping venue full of services and amenities that is perfectly situated in the heart of New Cairo. The venue proposes the highest quality commercial, administrative and medical facilities. La Mirada Plaza redefines the shopping and entertainment experience in Cairo. The mall boasts both modern designs and functionality for business owners and consumers. La Mirada Plaza serves as a commercial property facility for both La Mirada Residents and casual visitors.





LA MIRADA PLAZA

LA MIRADA

LEARN MORE

ENTRANCE

TRAVEL & TOURS

# COMMERCIAL ZONES

Behind the formulation of the commercial zones and shops, there is a conceptual art to showcase the value of each shop. The whole shopping venue offers the competent allocations, variety of spaces, diverse views & angles, amenities and facilities that perfectly suit every commercial business basics.







# AMENITIES & FACILITIES

## Spaces Varieties

Customized space offered that suit every business need. The administrative and commercial spots are suitable for hypermarkets, showrooms, restaurants, banks, megastores and more.

## Attached Outdoor

Specialized for specific commercial units. Some businesses will benefit from having additional outdoor spaces and extra greenery.

## Parking Lot

A vast parking lot to accommodate for customer's vehicles. The parking lot is equipped with safety and security facilities.

## Safety and security

Safety routines are handled by professionals to ensure there is a safe and secure environment. The safety measures include CCTV cameras, security personnel and causal visitor limitations.





### Firefighting systems

The firefighting infrastructure is effective and highly responsive to unexpected incidents. The installed systems are recognized international brands and well tested.



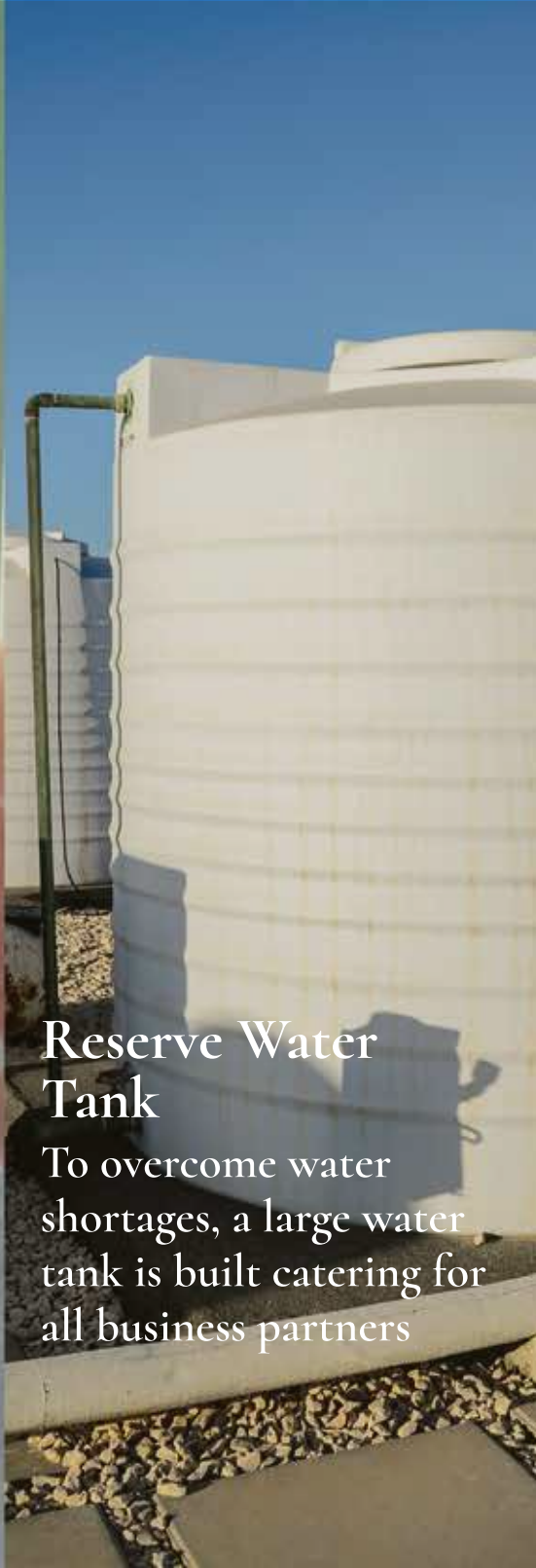
### Facility Management

To facilitate the daily routine, the facility management will handle all the day to day maintenance, cleaning and management of the mall.



### Elevators

Multiple elevators are installed around the venue to facilitate the transportation between the floors



### Reserve Water Tank

To overcome water shortages, a large water tank is built catering for all business partners

# LOCATION

Overseeing the Golden square - New Cairo, alongside a premium neighbourhood. Only a few minutes to spare on a ride to reach main roads, Cairo International airport and international schools & universities.





# THE SCOPE OF SERVICE

Due to the vital and essential location of La Mirada plaza, it supplies the neighbouring residential zones with the commercial and administrative experiences. The close and neighbouring residential zones are not limited to Le Rois, The Westin, Andalus district, Sodic East town, Katameyya gardens, Sephora heights, EL Patio and Regents Park.









LA MIRAZZOLA

LA MIRAZZOLA  
PLAZA

Cibioli

GOOD BREAD, GOOD SOUL

GATHERING ZONE

STERIOC

TODAY & TOMORROW

LA MIRAZZOLA



# La Mirada Mall

## Shop 1

Ground floor area :

89 m<sup>2</sup>

Outdoor area :

83 m<sup>2</sup>

Upperground floor area :

93 m<sup>2</sup>

### Ground floor

1- Kitchen 6.55 x 3.30 m<sup>2</sup>

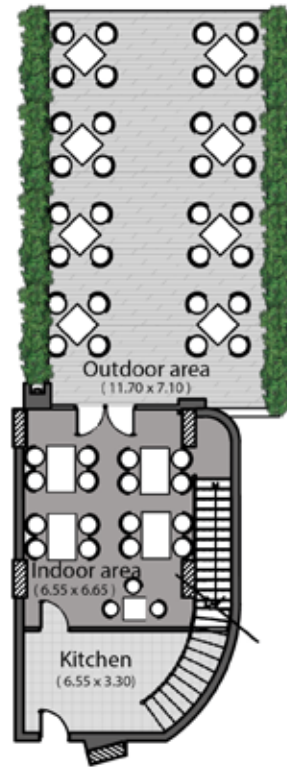
2- Indoor area 6.55 x 6.65 m<sup>2</sup>

### Outdoor area

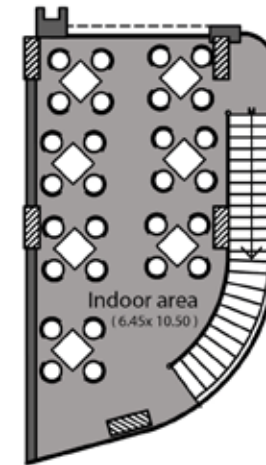
1- Outdoor 11.70 x 7.10 m<sup>2</sup>

### Upper ground floor

1- Indoor area 6.45 x 10.50 m<sup>2</sup>



Ground floor



Upper ground floor



All dimensions shown above are axis to axis . Diagrams are not to scale , doesn't include structural elements and are for illustrative purposes only. The total built-up area of the unit includes the walls thickness and the unit share of building utilities .

# La Mirada Mall

## Shop 2

Ground floor area :

72 m<sup>2</sup>

Outdoor area :

64 m<sup>2</sup>

Upperground floor area :

88 m<sup>2</sup>

### Ground floor

- 1- Kitchen 5.10 x 3.25 m<sup>2</sup>
- 2- Indoor area 5.10 x 6.70 m<sup>2</sup>

### Outdoor area

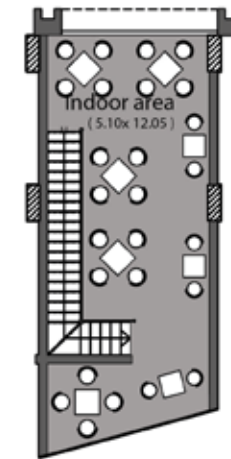
- 1- Outdoor 11.70 x 5.50 m<sup>2</sup>

### Upper ground floor

- 1- Indoor area 5.10 x 12.05 m<sup>2</sup>



Ground floor



Upper ground floor



All dimensions shown above are axis to axis . Diagrams are not to scale , doesn't include structural elements and are for illustrative purposes only. The total built-up area of the unit includes the walls thickness and the unit share of building utilities .



# La Mirada Mall

## Shop 3

Ground floor area :

74 m<sup>2</sup>

Outdoor area :

129 m<sup>2</sup>

Upperground floor area :

95 m<sup>2</sup>

### Ground floor

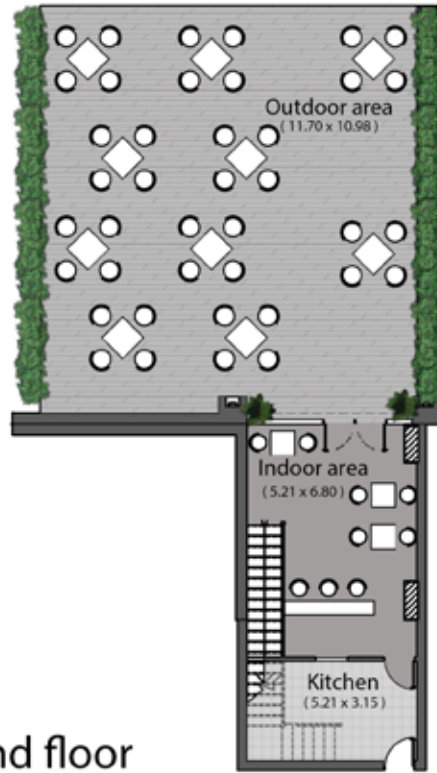
- 1- Kitchen 5.21 x 3.15 m<sup>2</sup>
- 2- Indoor area 5.21 x 6.80 m<sup>2</sup>

### Outdoor area

- 1- Outdoor 11.70 x 10.98 m<sup>2</sup>

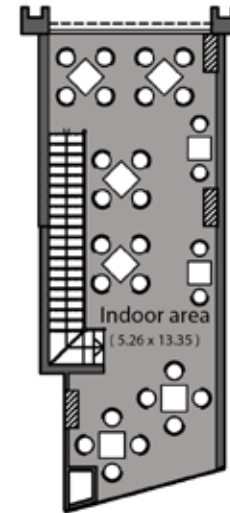
### Upper ground floor

- 1- Indoor area 5.26 x 13.35 m<sup>2</sup>



Ground floor

Upper ground floor



All dimensions shown above are axis to axis . Diagrams are not to scale , doesn't include structural elements and are for illustrative purposes only. The total built-up area of the unit includes the walls thickness and the unit share of building utilities .

# La Mirada Mall

## Shop 4

Ground floor area :  
59 m<sup>2</sup>

Outdoor area :  
49 m<sup>2</sup>

Upperground floor area :  
58 m<sup>2</sup>

### Ground floor

- 1- Kitchen 4.20 x 3.15 m<sup>2</sup>
- 2- Indoor area 4.20 x 6.65 m<sup>2</sup>

### Outdoor area

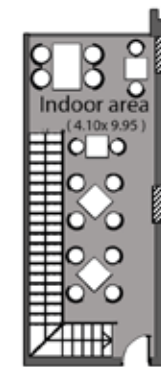
- 1- Outdoor 11.70 x 4.20 m<sup>2</sup>

### Upper ground floor

- 1- Indoor area 4.10 x 9.95 m<sup>2</sup>



Ground floor



Upper ground floor



All dimensions shown above are axis to axis . Diagrams are not to scale , doesn't include structural elements and are for illustrative purposes only. The total built-up area of the unit includes the walls thickness and the unit share of building utilities .



# La Mirada Mall

## Shop 5

Ground floor area :  
59 m<sup>2</sup>

Outdoor area :  
46 m<sup>2</sup>

Upperground floor area :  
57 m<sup>2</sup>

### Ground floor

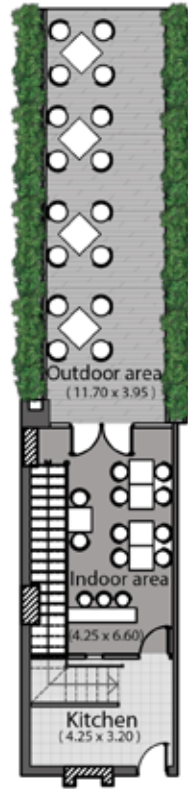
- 1- Kitchen 4.25 x 3.20 m<sup>2</sup>
- 2- Indoor area 4.25 x 6.60 m<sup>2</sup>

### Outdoor area

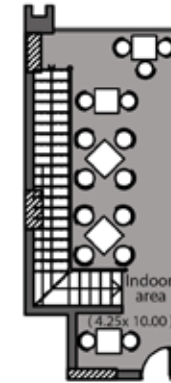
- 1- Outdoor 11.70 x 3.95 m<sup>2</sup>

### Upper ground floor

- 1- Indoor area 4.25 x 10.00 m<sup>2</sup>



Ground floor



Upper ground floor



All dimensions shown above are axis to axis . Diagrams are not to scale , doesn't include structural elements and are for illustrative purposes only. The total built-up area of the unit includes the walls thickness and the unit share of building utilities .

# La Mirada Mall

## Shop 6

Ground floor area :  
75 m<sup>2</sup>

Outdoor area :  
65 m<sup>2</sup>

Upperground floor area :  
62 m<sup>2</sup>

### Ground floor

- 1- Kitchen 5.35 x 3.20 m<sup>2</sup>
- 2- Indoor area 5.35 x 6.65 m<sup>2</sup>

### Outdoor area

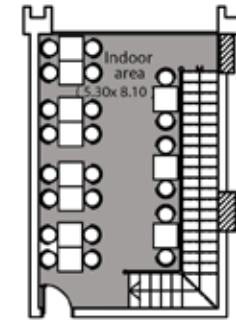
- 1- Outdoor 11.70 x 5.60 m<sup>2</sup>

### Upper ground floor

- 1- Indoor area 5.30 x 8.10 m<sup>2</sup>



Ground floor



Upper ground floor



All dimensions shown above are axis to axis . Diagrams are not to scale , doesn't include structural elements and are for illustrative purposes only. The total built-up area of the unit includes the walls thickness and the unit share of building utilities .



# La Mirada Mall

## Shop 7

Ground floor area :  
125 m<sup>2</sup>

Outdoor area :  
235 m<sup>2</sup>

Upperground floor area :  
252 m<sup>2</sup>

### Ground floor

- 1- Kitchen 6.95 x 3.10 m<sup>2</sup>
- 2- Indoor area 10.48 x 6.75 m<sup>2</sup>

### Outdoor area

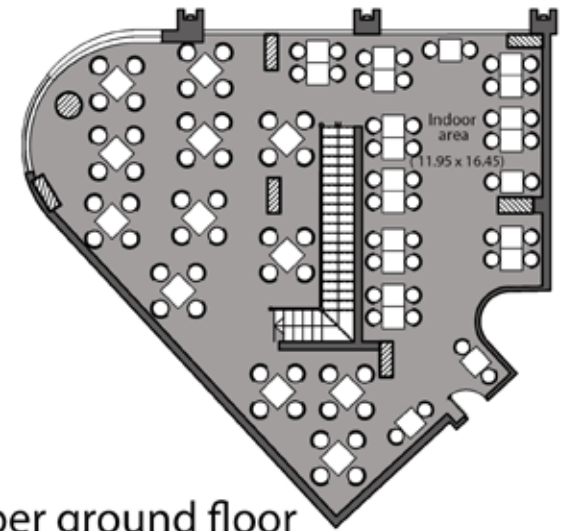
- 1- Outdoor 14.15 x 16.90 m<sup>2</sup>

### Upper ground floor

- 1- Indoor area 11.95 x 16.45 m<sup>2</sup>



Ground floor



Upper ground floor



All dimensions shown above are axis to axis . Diagrams are not to scale , doesn't include structural elements and are for illustrative purposes only. The total built-up area of the unit includes the walls thickness and the unit share of building utilities .

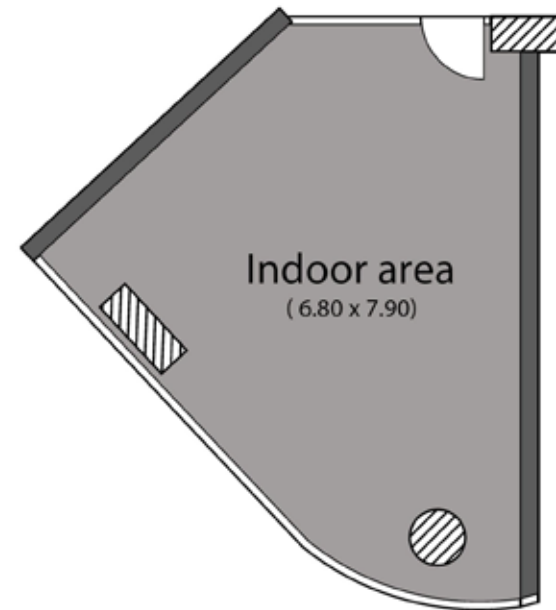
# La Mirada Mall

## Shop 11

Shop area :  
60 m<sup>2</sup>

### Upper ground floor

1- Indoor area      6.80 x 7.90 m<sup>2</sup>



### Upper ground floor



All dimensions shown above are axis to axis . Diagrams are not to scale , doesn't include structural elements and are for illustrative purposes only. The total built-up area of the unit includes the walls thickness and the unit share of building utilities .



# La Mirada Mall

## Shop 12

Shop area :  
49 m<sup>2</sup>

### Upper ground floor

1- Indoor area      4.45 x 7.75 m<sup>2</sup>



Upper ground floor

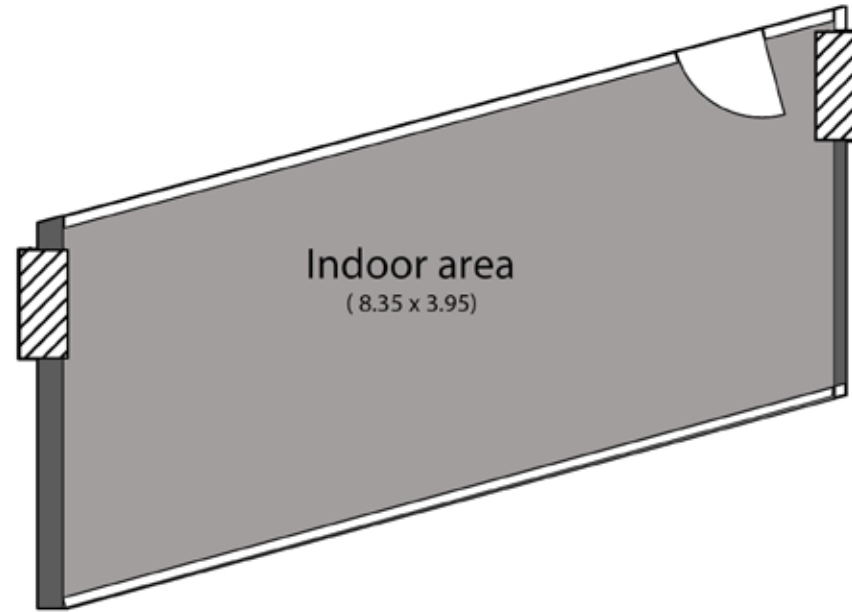


All dimensions shown above are axis to axis . Diagrams are not to scale , doesn't include structural elements and are for illustrative purposes only. The total built-up area of the unit includes the walls thickness and the unit share of building utilities .

# La Mirada Mall

## Shop 13

Shop area :  
45 m<sup>2</sup>



Indoor area  
( 8.35 x 3.95 )

## Upper ground floor

1- Indoor area      8.35 x 3.95 m<sup>2</sup>

## Upper ground floor



All dimensions shown above are axis to axis . Diagrams are not to scale , doesn't include structural elements and are for illustrative purposes only. The total built-up area of the unit includes the walls thickness and the unit share of building utilities .



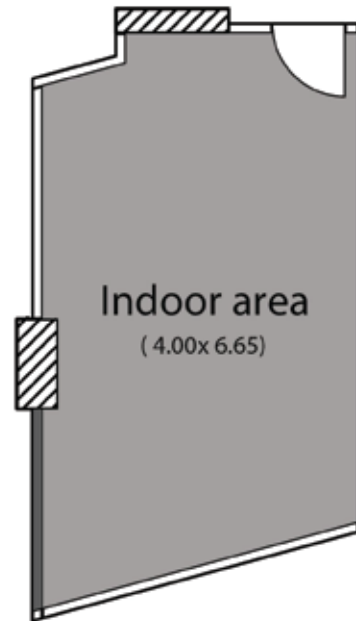
# La Mirada Mall

## Shop 14

Shop area :  
38 m<sup>2</sup>

### Upper ground floor

1- Indoor area      4.00 x 6.65 m<sup>2</sup>



Upper ground floor



All dimensions shown above are axis to axis . Diagrams are not to scale , doesn't include structural elements and are for illustrative purposes only. The total built-up area of the unit includes the walls thickness and the unit share of building utilities .

# La Mirada Mall

## Shop 15

Shop area :  
32 m<sup>2</sup>

### Upper ground floor

1- Indoor area      4.00 x 5.65 m<sup>2</sup>



Upper ground floor



All dimensions shown above are axis to axis . Diagrams are not to scale , doesn't include structural elements and are for illustrative purposes only. The total built-up area of the unit includes the walls thickness and the unit share of building utilities .



# La Mirada Mall

## Shop 16

Shop area :  
26 m<sup>2</sup>



Upper ground floor

## Upper ground floor

1- Indoor area 4.00 x 4.55 m<sup>2</sup>



All dimensions shown above are axis to axis . Diagrams are not to scale , doesn't include structural elements and are for illustrative purposes only. The total built-up area of the unit includes the walls thickness and the unit share of building utilities .

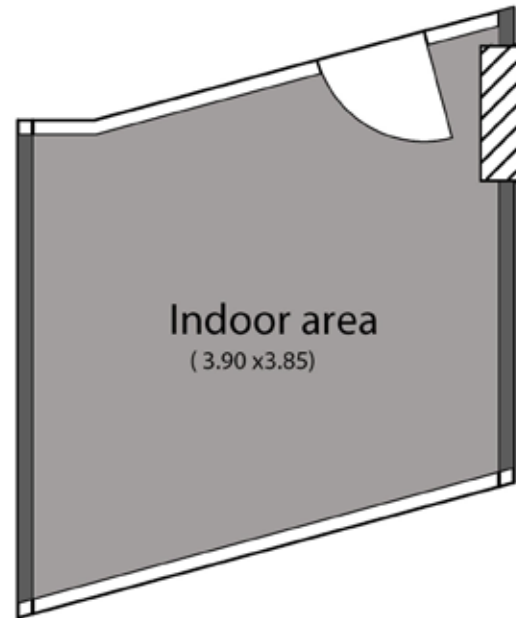
# La Mirada Mall

## Shop 17

Shop area :  
22 m<sup>2</sup>

### Upper ground floor

1- Indoor area      3.90 x 3.85 m<sup>2</sup>



### Upper ground floor



All dimensions shown above are axis to axis . Diagrams are not to scale , doesn't include structural elements and are for illustrative purposes only. The total built-up area of the unit includes the walls thickness and the unit share of building utilities .



# La Mirada Mall

## Shop 18

Shop area :  
39 m<sup>2</sup>

### Upper ground floor

1- Indoor area      4.00 x 7.10 m<sup>2</sup>



### Upper ground floor



All dimensions shown above are axis to axis . Diagrams are not to scale , doesn't include structural elements and are for illustrative purposes only. The total built-up area of the unit includes the walls thickness and the unit share of building utilities .

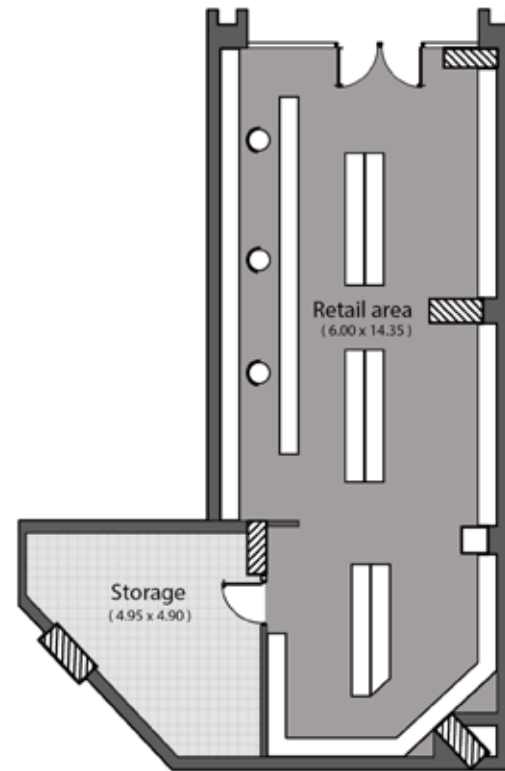
# La Mirada Mall

## PHARMACY

Ground floor area :  
149 m<sup>2</sup>

### Ground floor

- 1- Retail area 6.00 x 14.35 m<sup>2</sup>
- 2- Storage 4.95 x 4.90 m<sup>2</sup>



Ground floor



All dimensions shown above are axis to axis . Diagrams are not to scale , doesn't include structural elements and are for illustrative purposes only. The total built-up area of the unit includes the walls thickness and the unit share of building utilities .



# La Mirada Mall

## BANK

Ground floor area :  
357 m<sup>2</sup>

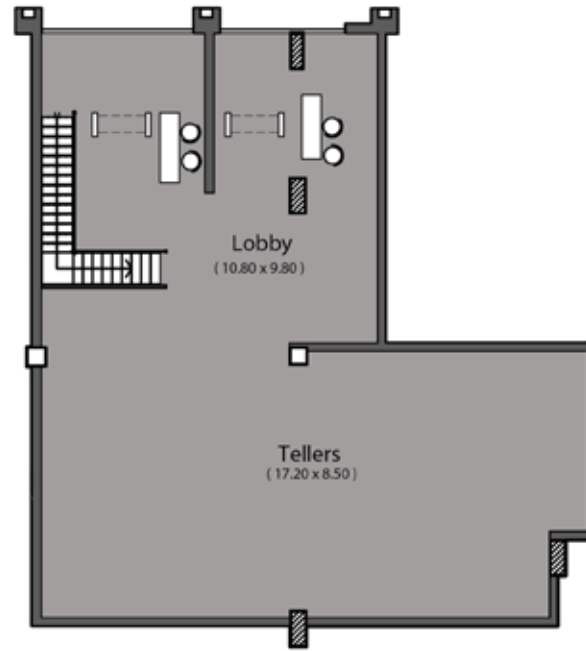
Upperground floor area :  
125 m<sup>2</sup>

### Ground floor

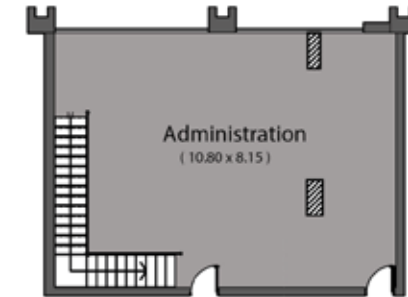
- 1- Lobby 10.80 x 9.80 m<sup>2</sup>
- 2- Tellers 17.20 x 8.50 m<sup>2</sup>

### Upper ground floor

- 1- Administration 10.80 x 8.15 m<sup>2</sup>



Ground floor



Upper ground floor

All dimensions shown above are axis to axis . Diagrams are not to scale , doesn't include structural elements and are for illustrative purposes only. The total built-up area of the unit includes the walls thickness and the unit share of building utilities .

**SALES OFFICE:**  
47TH ADMINISTRATIVE BUILDING  
NORTHERN 90th ST - 5TH SETTLEMENT.  
NEW CAIRO EGYPT

**HEAD OFFICE:**  
40 THAWRA STREET,  
HELIOPOLIS,  
CAIRO - EGYPT

**HOTLINE: 16632**  
**WWW.LAMIRADA-EG.CO**